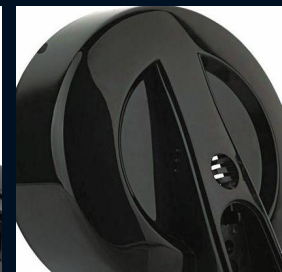
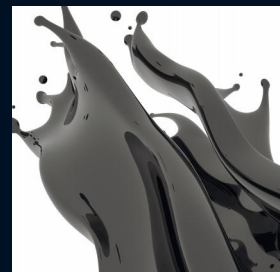
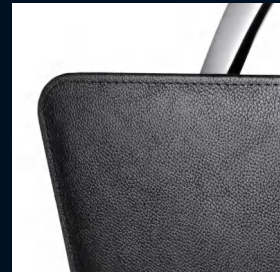
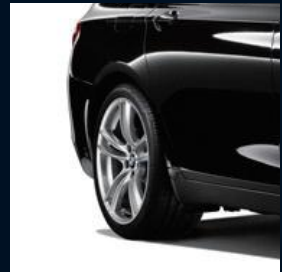


应用领域
APPLICATION



色素炭黑
CARBON BLACK

 Sunrise 旭阳®
世界因我更精彩

安徽旭阳集团 (安徽省合肥市双凤开发区金沪路18号)

Anhui Sunrise Aluminium Pigments Co.,Ltd. (Shuangfeng Development Zone, Hefei, Anhui, China)

T. (86 551) 66399111 F. (86 551) 66399118 xuyang@xuyang.cc xuyang@ahxuyang.cn

☎ 400 999 2508 www.ahxuyang.cn

公司简介

Company Profile

安徽旭阳集团,是在安徽合肥投资创办,是一家集研发、生产、销售为一体的国家级高新技术企业。旗下色素炭黑生产线,采用先进设备和科学化管理,在色素炭黑生产和处理上有着成熟的技术。产品广泛应用于高档油漆、油墨、塑料、橡胶制品等领域,欢迎来电来信洽谈。

Anhui Sunrise Aluminium Pigments Co.,Ltd was established in Hefei - Capital of Anhui Province, which is a national high-tech enterprise with R&D, manufacture and sales. The production line of carbon black pigment well achieved mature technology in manufacturing and product improving by equipped advanced machines with scientific management. Products are abundant used in paint, ink, paste and leather etc. Welcome to call and negotiation.



炭黑生产流程图

Production Process flow

产品介绍表

Products Introduction

型号 Grade	粒径 Average Original Particle Size	着色力 Tinting Strength VS SRB3#	DBP吸附值 DBP Oil Absorption (cc/100g)		吸碘值 Surface Area m ² /g	PH值 PH value	挥发份 Volatile Content	推荐领域 Recommended Applications																	
			粉状	粒状				涂料与油漆 Coatings&Paint							油墨 Inks				塑料 Plastics			粘合密封胶 Adhesive & Sealant	色浆 Color Paste		
								汽车 Auto-Motive	工业 Industrial	底漆 Primer	粉末涂料 Powder Coating	五金 Metallic	木材 Wood	建筑 Archit-ectural	管材 Offset	凹印 Gravure	柔印 Flexo	调节剂 Relief	屏幕 Screen	母粒 Master Batch	纤维 Synthetic Fibre			缆线 Wires & Cable	人造革 Synthetic Leather
PCA	12	125	104	102	425	2.3	13.5	√																	
PCB	13	125	104	102	385	2.3	10.2		√		√		√												
XY1000	16	138	104	102	342	2.3	7.4		√			√													
XY1100	18	135	100	98	255	2.3	8.0		√														√		√
XY2429	20	130	98	96	187	2.3	9.7		√	√	√	√	√	√		√	√	√	√						√
XY2419	22	127	85	83	145	4.9	4.9		√		√	√													
XY2410	24	115	85	83	118	4.9	5		√		√	√													
XY2879	16	138	55	56	285	8.5	3.8																√		
XY2869	19	135	55	56	225	8.5	1.8											√		√					
XY2849	25	130	62	60	140	8.5	2.8				√								√		√				√
XY5327	26	115	114	112	120	8	2.1							√						√			√		
XY3200	29	118	74	72	120	8	1.6				√										√				√
XY5319	31	112	70	68	82	8	3.1														√				√
XY5317	31	110	102	100	82	8	2							√				√	√				√		
XY5327W	27	113	110	无	115	9.6	10						√												
XY207	35	105	46	45	60	8.5	2.8			√					√	√									
XY207C	35	105	46	45	70	3	6								√	√									
XY4510	41	105	80	78	68	8	3																		√
XY6315	44	90	80	78	59	8	2.9										√								√

上述数据是通过测试获得的,但我们不能保证其他人或者厂家可得到类似的结果,并放弃和不承担以此数据为依据而产生的任何责任和义务
Above gate is obtained through the lab test, but we can not guarantee other factories could gets similar test results. And we do not take any responsibilities and obligations because of these date.

